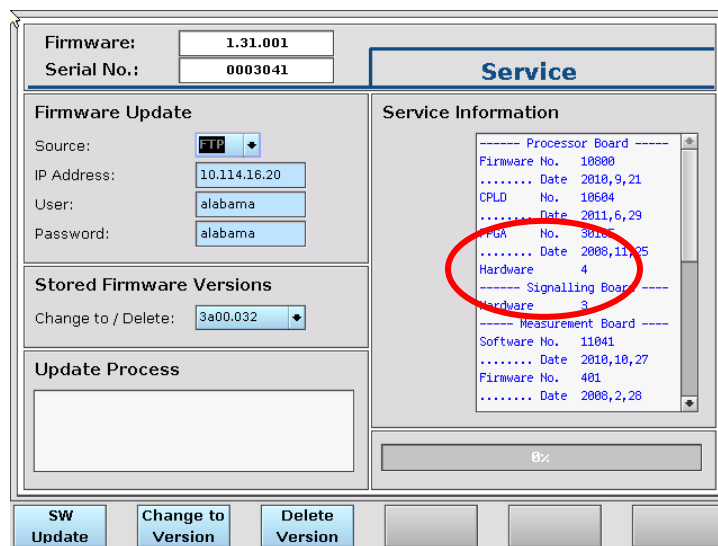


2201 ProLock Firmware Update

1. Make sure at least version 1.10 is installed on the 2200.
2. Check the hardware version of the processor board.

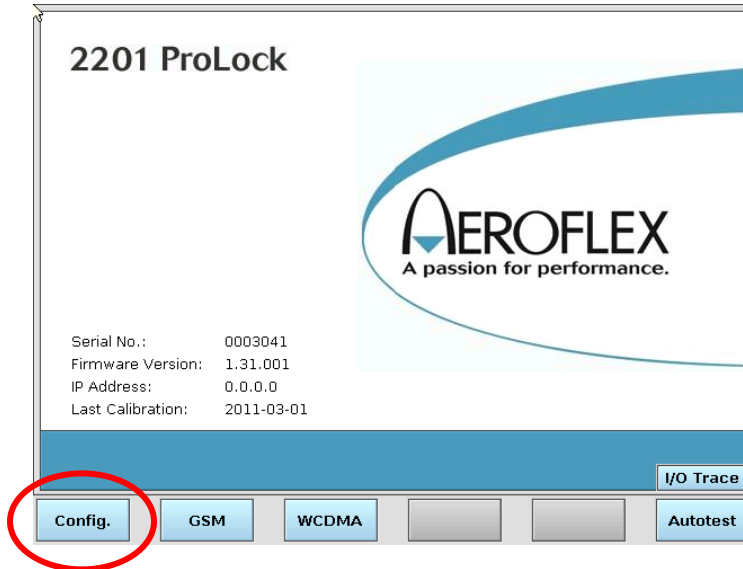
Press the **Config** softkey followed by the **Service** softkey.



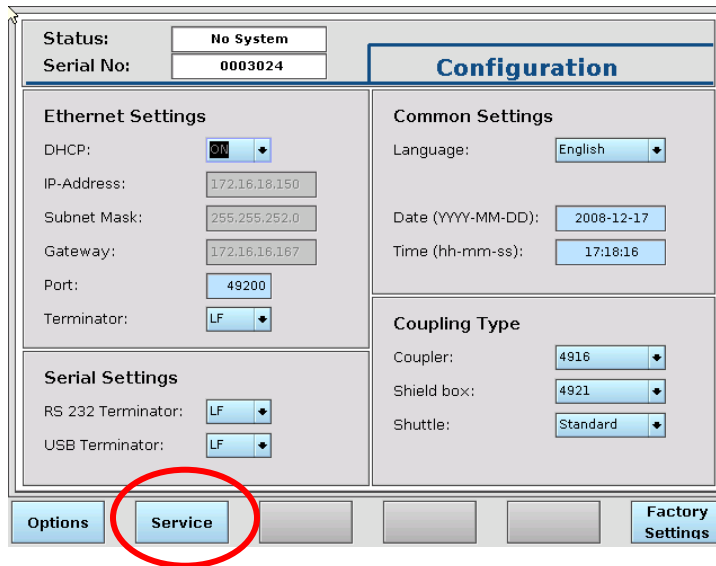
If the Processor Board is Hardware 5 it might be not possible to install firmware later than 1.31.001. During update process there will be notification and there will be no damage of the instrument. The necessary modification to install the latest firmware will be done during the next calibration or if options are purchased which requires firmware beyond 1.31.001.

3. Copy the 2200_x.x0.001.tar.gz file into the root folder of the USB flash drive.
4. Connect the USB device to the 2201 ProLock.

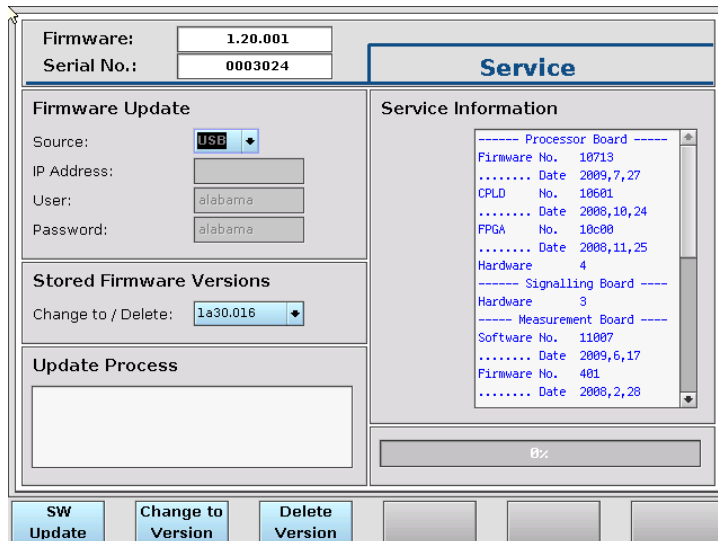
5. Press the **Config** softkey.



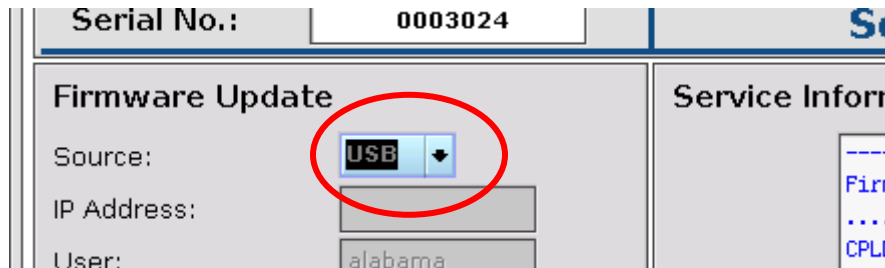
6. Press **Service** softkey.



7. The following screen appears:



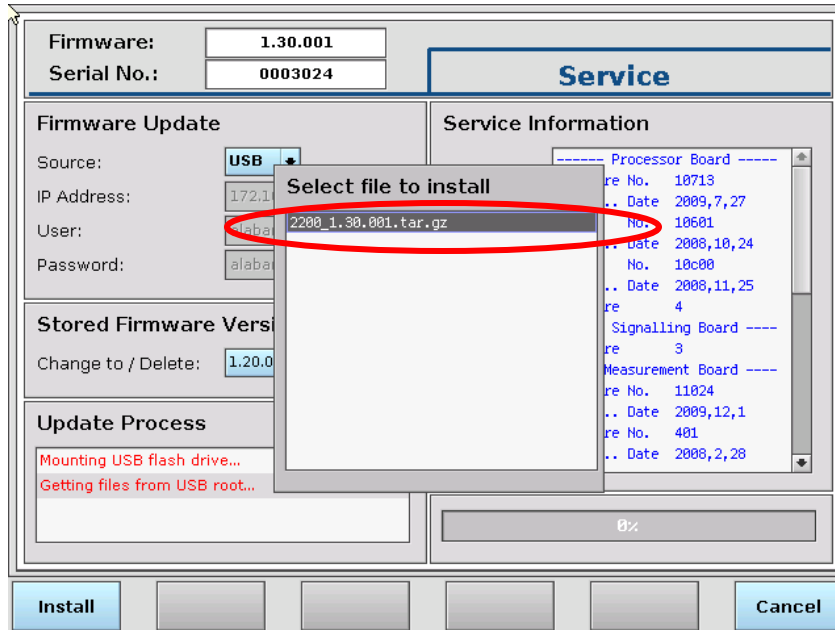
8. Make sure that the **USB** update is selected.



9. Press the **SW Update** softkey.



10. Select the new firmware version and press **Install**.



11. WAIT ...

12. In case the RESTART message appears restart the instrument by switching it off and on again.

