



3900 Series Digital Radio Test Set Getting Started Manual

Issue-2

EXPORT CONTROL WARNING: This document contains controlled technology or technical data under the jurisdiction of the Export Administration Regulations (EAR), 15 CFR 730-774. It cannot be transferred to any foreign third party without the specific prior approval of the U.S. Department of Commerce Bureau of Industry and Security (BIS). Violations of these regulations are punishable by fine, imprisonment, or both.

GETTING STARTED MANUAL

3900 SERIES

RADIO TEST SET

PUBLISHED By
Aeroflex

COPYRIGHT © Aeroflex 2010

All rights reserved. No part of this publication may be reproduced, stored in a retrieval system, or transmitted in any form or by any means, electronic, mechanical, photocopying, recording or otherwise without the prior permission of the publisher.

Original Printing	Jul 2005
Issue-2	Jul 2006
Issue-3	May 2007
Issue-4	Aug 2007
Issue-5	Aug 2008
Issue-6	Dec 2009
Reissued	Jan 2010
Issue-2	Nov 2010

10200 West York Street/ Wichita, Kansas 67215 U.S.A. / (316) 522-4981 / FAX (316) 524-2623

Subject to Export Control, see Cover Page for details.

This manual contains essential information relating to initial use of the unit.

Aeroflex recommends the operator become familiar with the Operation Manual contained on the accompanying CD-ROM.

Subject to Export Control, see Cover Page for details.

Safety Precautions

Safety First - To All Operations Personnel

General Conditions of Use

This product is designed and tested to comply with the requirements of IEC/EN61010-1 'Safety requirements for electrical equipment for measurement, control and laboratory use' for Class I portable equipment and is for use in a pollution degree 2 environment. The equipment is designed to operate from installation supply Category II.

Equipment should be protected from all liquids such as spills, leaks, etc. and precipitation such as rain, snow, etc. When moving the equipment from a cold to a hot environment, it is important to allow the temperature of the equipment to stabilize before it is connected to the supply to avoid condensation forming. The equipment must only be operated within the environmental conditions specified in the performance data.

Refer all servicing of unit to Qualified Technical Personnel. This unit contains no operator serviceable parts.

WARNING

Using this equipment in a manner not specified by the accompanying documentation may impair the safety protection provided by the equipment.

Case, Cover or Panel Removal

Opening the Case Assembly exposes the operator to electrical hazards that may result in electrical shock or equipment damage. Do not operate this Test Set with Case Assembly open.

Safety Identification in Technical Manual

This manual uses the following terms to draw attention to possible safety hazards that may exist when operating or servicing this equipment.

CAUTION

Identifies conditions or activities that, if ignored, can result in equipment or property damage (e.g., Fire).

WARNING

Identifies conditions or activities that, if ignored, can result in personal injury or death.

Equipment Grounding Protection

Improper grounding of equipment can result in electrical shock.

Subject to Export Control, see Cover Page for details.

Safety / Hazard Symbols in Manuals and on Units



CAUTION: Refer to accompanying documents. (This symbol refers to specific CAUTIONS represented on the unit and clarified in the text.)



Indicates a Toxic hazard. Some of the components used in this equipment include resins and other materials which give off toxic fumes if incinerated. Take appropriate precautions in the disposal of these items.



Indicates item is static sensitive.



AC TERMINAL: May supply or be supplied with AC or alternating voltage.

Use of Probes

Check the specifications for the maximum voltage, current and power ratings of any connector on the Test Set before connecting it with a probe from a terminal device. Be sure the terminal device performs within these specifications before using it for measurement, to prevent electrical shock or damage to the equipment.

Power Cords

Power cords must be in good working condition. Do not use frayed, broken or exposed bare wiring when operating this equipment.

Use Recommended Fuses Only

Use only fuses specifically recommended for the equipment at the specified current and voltage ratings.

Internal Battery

This unit contains a Lithium Ion Battery, serviceable only by a qualified technician.

CAUTION

EMI

Signal Generators can be a source of Electromagnetic Interference (EMI) to communication receivers. Some transmitted signals can cause disruption and interference to communication service out to a distance of several miles. Users should examine any operation that results in radiation of a signal (directly or indirectly) and should take necessary precautions to avoid potential communication interference problems.

Subject to Export Control, see Cover Page for details.

WARNING

Fire Hazard

Make sure that only fuses of the correct rating and type are used for replacement. If an integrally fused plug is used on the supply lead, ensure that the fuse rating is commensurate with the current requirements of this equipment.

WARNING

Electrical Hazards (AC supply voltage)

This equipment contains a protective grounding lead that conforms to IEC Safety Class I. To maintain this protection the supply lead must always be connected to the source of supply via a socket with a grounded contact.

The supply filter contains capacitors that may remain charged after the equipment is disconnected from the supply. Although the stored energy is within the approved safety requirements, a slight shock may be felt if the plug pins are touched immediately after removal.

Fuses

NOTE

The internal supply fuse is in series with the live conductor of the supply lead. If connection is made to a 2-pin un-polarized supply socket, the fuse may become transposed to the neutral conductor. If this occurs equipment components could remain at supply potential even after the fuse has ruptured.

WARNING

Beryllia

Beryllia (beryllium oxide) is used in the construction of some of the components in this unit. Use care when removing and disposing of these components. Do not put them in the general industrial or domestic waste. They should be separately and securely packed and clearly identified to show the nature of the hazard and then disposed of in a safe manner by an authorized toxic waste contractor.

Subject to Export Control, see Cover Page for details.

WARNING



Beryllium Copper

Some mechanical components within this instrument are manufactured from beryllium copper. This is an alloy with a beryllium content of approximately 5%. It represents no risk in normal use.

The material should not be machined, welded or subjected to any process where heat is involved. It must be disposed of as “special waste.” It must NOT be disposed of by incineration.

WARNING



Lithium

Lithium is a toxic substance. A Lithium battery is used in this equipment. The battery should in no circumstances be crushed, incinerated or disposed of in normal waste. Do not attempt to recharge this type of battery. Do not short circuit or force discharge since this might cause the battery to vent, overheat or explode.

WARNING

Tilt

Do not stack other instruments on Test Set when the instrument is in the tilt position.

CAUTION

Input Overload

On the RF N-type connector, the input power should not exceed 125 W (+51 dBm). On the RF TNC connector, the input power should not exceed 10 mW (+10 dBm).

CAUTION



Static Sensitive Components

This equipment contains static sensitive components which may be damaged by handling. Do not remove instrument covers as this may result in damage to the Test Set. There are no user-serviceable parts inside.

Subject to Export Control, see Cover Page for details.

CAUTION

Suitability for Use

This equipment has been designed and manufactured by Aeroflex to generate, receive and analyze RF/audio signals.

If the equipment is not used in a manner specified by Aeroflex, the protection provided by the equipment may be impaired.

Aeroflex has no control over the use of this equipment and cannot be held responsible for events arising from its use other than for its intended purpose.

Subject to Export Control, see Cover Page for details.

Table of Contents

Service Upon Receipt of Material	9
Installation	11
Specifications	12
External Cleaning	13
Controls, Connectors and Indicators	14
Operation	22
Display Layout	25
Fuse Replacement	28

Subject to Export Control, see Cover Page for details.

Service Upon Receipt of Material

Unpacking

Special design packing material inside this shipping carton provide maximum protection for the 3900 Radio Test Set. Avoid damaging ship carton and packing material when unpacking equipment; if necessary it can be reused to ship Test Set.

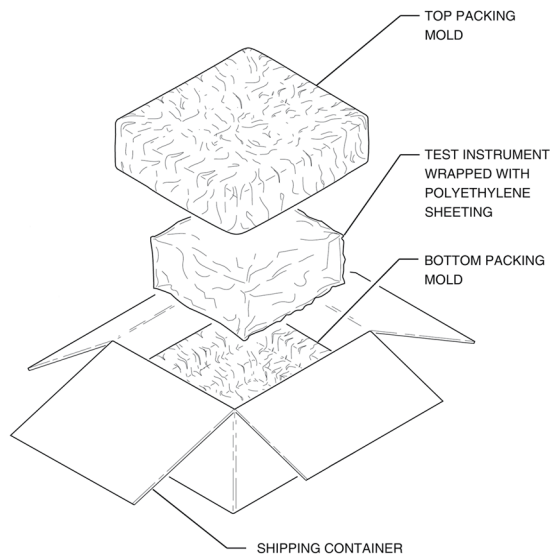
CAUTION

To prevent personal injury or damage to the Test Set, Aeroflex recommends two people unpack the Test Set.

Use the following steps to unpack the 3900:

STEP	PROCEDURE
------	-----------

1. Cut and remove sealing tape on top of the carton.
2. Open shipping container and remove top packing mold.
3. Grasp Test Set firmly while restraining the shipping container. Lift the equipment and packing material vertically out of the shipping container.
4. Place Test Set and end cap packing on a flat, clean and dry surface.
5. Remove protective plastic bag from the Test Set.
6. Place protective plastic bag and end cap packing materials inside shipping container.
7. Store shipping container for possible future use.



Subject to Export Control, see Cover Page for details.

3900 Series Getting Started Manual

Checking Unpacked Equipment

Inspect equipment for possible damage incurred during shipment. If Test Set had been damaged, report the damage to Aeroflex Customer Service. Review packing slip to verify shipment is complete. Packing slip identifies the following standard items as well as purchased options. Report all discrepancies to Aeroflex.

Contact:

Aeroflex Customer Service Dept.
10200 West York Street
Wichita, Kansas 67215
Telephone: 800-835-2350
FAX: 316-529-5330
email: americas.service@aeroflex.com

3901/3902 Standard Items

Description	Part Number	QTY
3901 or 3902 Ship Unit	72411 (9001-4402-200) (3901) 72410 (9001-4402-100) (3902)	1
RTS Accessory Kit	63929 (7001-4247-400)	1
390X Power Cords Kit	63933 (7001-4444-800)	1
3900 Series Operation Manual (CD-ROM)	6047 (1002-4400-2C0)	1
3900 Series Getting Started Manual	6050 (1002-4400-8P0)	1

3920 Standard Items

Description	Part Number	QTY
3920 Ship Unit	72412 (9001-4402-800)	1
3900 Series Operation Manual (CD-ROM)	6047 (1002-4400-2C0)	1
3900 Series Getting Started Manual	6050 (1002-4400-8P0)	1

Cord Configuration

27477 (23422/002) Cord configuration for use in the UK.
27478 (23422/005) Cord configuration for use in North America.
27480 (23422/007) Cord configuration for use in Continental Europe
27516 (23424/159) 3-Wire (grounded) power cord

Subject to Export Control, see Cover Page for details.

Installation

General

The 3900 Radio Test Set is a Safety Class 1 instrument that must be grounded before use. The power cord supplied with the test set, or an appropriate replacement, should be used to connect the Test Set to a grounded AC supply outlet. Ensure that the power cord is properly connected to the AC Power Connector on the rear panel of the Test Set prior to connecting unit to AC supply outlet.

Class I Power Cords (3-core)

To connect the test set to a Class II (ungrounded) 2 terminal socket outlet, fit the power cord with either a 3 pin Class I plug used in conjunction with an adapter incorporating a ground wire, or fit it with a Class II plug containing an integral ground wire. The ground wire must be securely fastened to ground; grounding one terminal on a 2 terminal socket does not provide adequate protection.

A 3-wire (grounded) power cord containing a molded IEC 320 connector is included with the 3900. The cable must be fitted with an approved plug which, when plugged into an appropriate 3 terminal socket outlet, grounds the case of the test set. Failure to ground the test set or using a damaged power cord may expose the operator to hazardous voltage levels.



United Kingdom



North America

Ventilation

The 3900 is force air-cooled by three fans that draw air through vents in the sides of the case. Do not obstruct the air vents while the instrument is in use. Avoid standing the instrument on or close to other equipment that is hot.

Subject to Export Control, see Cover Page for details.

Specifications

Power Requirements

AC Voltage

100 V to 120 VAC @ 60 Hz

220 V to 240 VAC @ 50 Hz

Power Consumption

Nominally 120 W (200 W Max)

Mains Supply Voltage Fluctuations

10% of the nominal voltage

Fuse Requirements

3 A, 250 V, Type F

Environmental

Operating Temperature

0 to 50°C

Tested in accordance with
MIL-PRF-28800F Class 3

Warm-up Time

15 minutes 1

Storage Temperature

-40 to 71°C

Tested in accordance with
MIL-PRF-28800F Class 3

Relative Humidity

80% up to 31°C decreasingly linearly to
50% at 40°C

Tested in accordance with
MIL-PRF-28800F Class 3

Altitude

4,000 m (13,123 ft)

Tested in accordance with
MIL-PRF-28800F Class 3

Shock and Vibrations

30 G Shock (Functional Shock)

5-500 Hz random vibrations

Tested in accordance with
MIL-PRF-28800F Class 3

Environmental (cont)

Use

Pollution Degree 2

EMC

EN 61326

Dimensions and Weight

Height	Width	Depth
19.7 cm	35.6 cm	52.0 cm
7.75 in	14.0 in	20.5 in
Weight	16.5 kg (36.8 lbs)	

Subject to Export Control, see Cover Page for details.

External Cleaning

The following procedure contains routine instructions for cleaning the outside of the Test Set.

CAUTION

Disconnect power from Test Set to avoid possible damage to electronic circuits.

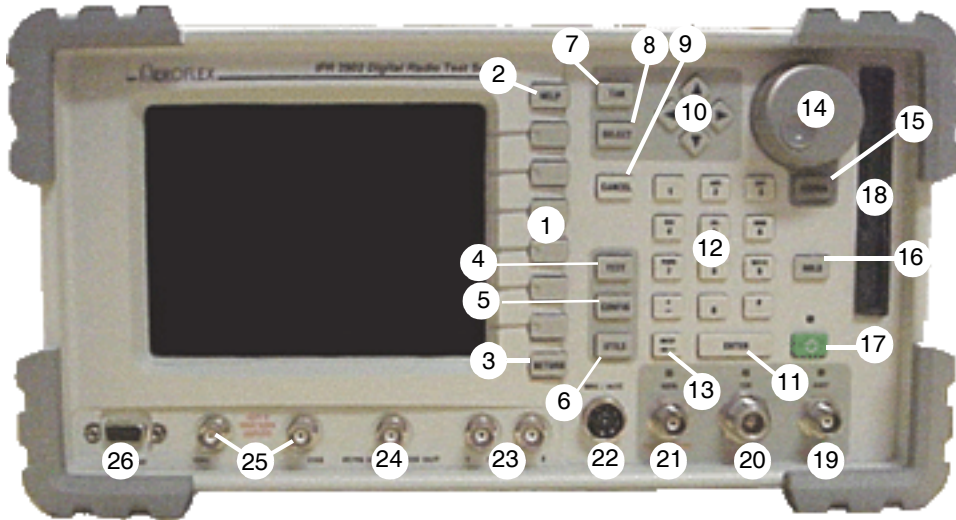
STEP	PROCEDURE
------	-----------

1. Clean front panel buttons and display face with soft lint-free cloth. If dirt is difficult to remove, dampen cloth with water and a mild liquid detergent.
2. Remove grease, fungus and ground-in dirt from surfaces with soft lint-free cloth dampened (not soaked) with isopropyl alcohol.
3. Remove dust and dirt from connectors with soft-bristled brush.
4. Cover connectors, not in use, with suitable dust cover to prevent tarnishing of connector contacts.
5. Clean cables with soft lint-free cloth.
6. Paint exposed metal surface to avoid corrosion.

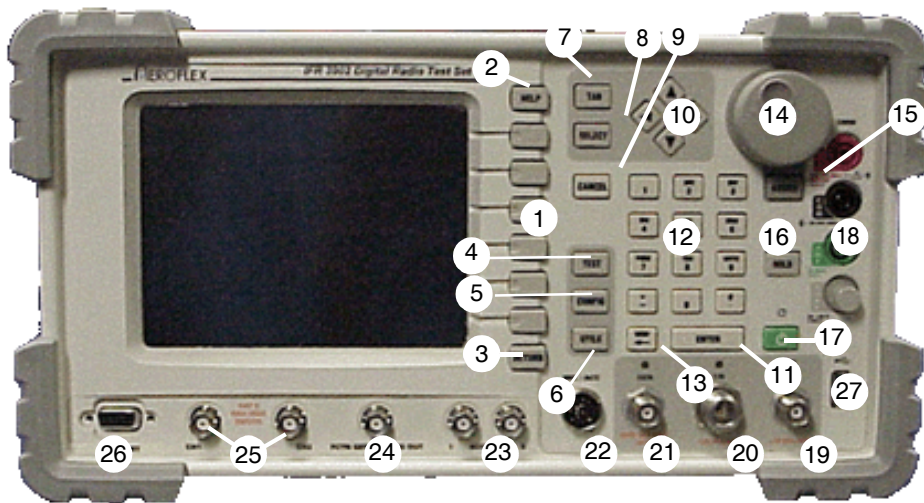
Subject to Export Control, see Cover Page for details.

Controls, Connectors and Indicators

Front Panel



3901/3902 Front Panel Connectors



3920 Front Panel Connectors

Numerical references are indicated in parenthesis (nn). Front Panel Connectors

Subject to Export Control, see Cover Page for details.

Soft Keys (1)

The 3900 contains six soft keys that are active when a label is displayed on the screen to the left of the soft key. The text on the label identifies the key, the outline and background color provide information about the purpose, state and type of action the key initiates.

HELP Key (2)

Accesses operational description for Test Set fields and functions.

RETURN Key (3)

Returns the soft key menu back one level from a soft key sub-menu. Each press of the RETURN Key moves back through one level.

TEST Key (4)

Selects the TEST function. When the TEST function is selected, pressing the TEST Key displays the TEST floating menu.

CONFIG Key (5)

Selects the CONFIG (Configuration) function of the current operating system which provides access to configuration settings for the currently selected system.

UTILS Key (6)

This key selects the UTILS (Utilities) function. When the UTILS (Utilities) function is selected, pressing the UTILS Key displays the Utilities floating menu. The UTILS (Utilities) function provides access to general Test Set features which are not system specific.

TAB Key (7)

When the TEST function is selected and the display Tiles are minimized, each press of the TAB Key sequentially moves the focus to a different Tile.

When the TEST function is selected and one of the display Tiles is maximized, pressing the TAB Key displays a menu listing the Tiles currently active on the minimized display. Selecting from the menu displays the requested Tile in maximized view.

SELECT Key (8)

When a menu item is highlighted pressing SELECT activates that item. When a settings box is highlighted pressing SELECT selects the box for editing, indicated by a gold background.

When a toggle or option button is selected, pressing SELECT changes the state of the button.

CANCEL Key (9)

When Data Input Keys are used to select a Numeric Entry Box or Text Entry Box for editing this key cancels any changes that have been made and restores the original setting as long as the ENTER Key or the RETURN Key has not been pressed. CANCEL does not restore a value to a previous setting if the setting has been changed using the Cursor Keys or Rotary Control Knob.

While a menu is displayed, pressing CANCEL closes the menu without activating the highlighted menu item.

Cursor Keys (10)

The Test Set contains four directional cursor keys that are used to navigate display screens.

ENTER Key (11)

Enables the values that have been entered using the Data Input Keys. New values are not effective until this key or the SELECT Key has been pressed. The background on a selected Numeric Input Box or Text Entry Box remains gold while the box is in the edit state.

Data Input Keys (12)

Numeric/Alphabetic Keys

Data Input Keys enter numeric values or text into a selected data entry box.

Signage Keys

- (minus)
- . (decimal point)
- * (star/asterik)
- # (hash)

BKSP (BACKSPACE) Key (13)

When a numeric entry box or a text box is selected for editing, this key deletes the character or digit to the left of the position indicator.

Rotary Control Knob (14)

The Rotary Control Knob can be used to used to navigate between fields of a selected Tile, select data from drop-down menus, edit numerical content in data fields and to adjust various Test Set settings.

ASSIGN Key (15)

Functions such as loudspeaker volume, squelch level and display brightness are adjusted by assigning the functions to the Rotary Control Knob. Pressing the ASSIGN Key displays soft keys for functions applicable to the current operating system. Pressing one of these soft key assigns the associated function to the Rotary Control Knob.

Display HOLD Key (16)

The Hold Key freezes the display to allow the user to capture and save the current screen display. Refer to the section titled Display Hold Tile for use of this feature.

On/Standby Key (17)

The Power Supply On/Standby Key is referred to as the On/Standby Key. This key is used to power down the Test Set to retain current settings. This key is active when the associated LED is illuminated. If the LED is not illuminated, the Test Set is in an OFF condition.

3.5 inch Floppy Disk Drive (18) (3901/3902)

The 3.5 inch floppy disk drive provides an interface to the Test Set for downloading data, settings and captured display files. The Floppy Disk Drive is only available on the 3901 and 3902.

Subject to Export Control, see Cover Page for details.

Digital Multimeter (18) (3920)

The DMM (Digital Multimeter) provides users with the ability to perform resistance measurements and AC and DC current and voltage measurements.

The Digital Multimeter (DMM) Option (390XOPT035) is available on the 3920. The 3901 and 3902 Test Sets may be upgraded to this option.

RF Input and Output Connectors

The routing of signals within the Test Set to and from the RF input and output connectors is controlled from the selected Test System. There is an LED above each connector that indicates when a connector has been selected; the LED does not indicate when the connector is ON.

Audible and Visual Overload Warning

If the RF Signal applied to the ANT Connector exceeds the safe maximum level, an audible and visual warning is triggered. The overload warning is also triggered if excessive reverse power is applied to the GEN Connector. The Overload Warning is reset on the User Calibration Tile and Operations/Status Tile.

CAUTION

If the Audible warning triggers, reduce power immediately. Do not power down the Test Set as this does not remove the overload power from the connection.

WARNING

Do not disconnect the RF cable from the Test Set as this may cause burns to the hands.

ANT (Antenna) Connector (19)

The RF analyzer input is a 50 ohm TNC input, providing maximum sensitivity input to the RF analyzer of the Test Set.

The rated maximum input level for the ANT Connector is +10 dBm.

T/R Connector (20)

The combined (Duplexed) RF Gen output and high power RF analyzer input is a 50 ohm N type connector which provides an RF Gen output connection and an RF analyzer input and broadband power meter connection. The RF Gen maximum output level and the RF analyzer sensitivity are lower than when using the separate GEN Connector and ANT Connector.

The rated maximum input power level for the T/R Connector is 125 W.

GEN (Generator) Connector (21)

The RF Gen output is a 50 ohm TNC output, providing the maximum RF output level from the RF Gen. The RF GEN Connector is reverse power protected to a level of +10 dBm.

MIC/ACC Connector (22)

This connector can be used to connect a microphone, headset, or speaker. The Connector accepts a PTT (Press To Talk) microphone for testing simplex trunked radios.

Subject to Export Control, see Cover Page for details.

Audio 1 and 2 IN Connectors (23)

AUDIO IN 1 and 2 are the primary AF input and external modulation input connectors. The Connectors can be configured as high impedance or 600 ohm unbalanced.

AUDIO IN 1 and AUDIO IN 2 can be jointly configured as 600 ohm balanced for AF IN only, in which case AUDIO IN 2 is not available for EXT MOD. The MIC/ACC Connector can be used for EXT MOD IN if required.

FCTN GEN/DEMODO Connector (24)

(Function Generator and Demodulated Signal Output)

This connector is the primary AF GEN output. The connector can be configured as DEMOD OUT and can also be used for Demod Audio, Audio 1, Audio 2 or MIC.

Scope CH1/CH2 Connectors (25)

The Scope CH1 and CH2 connectors are the signal input connectors for the Oscilloscope. They provide a maximum input rating of 100 Vpp.

Test Connector (26)

Reserved for future development.

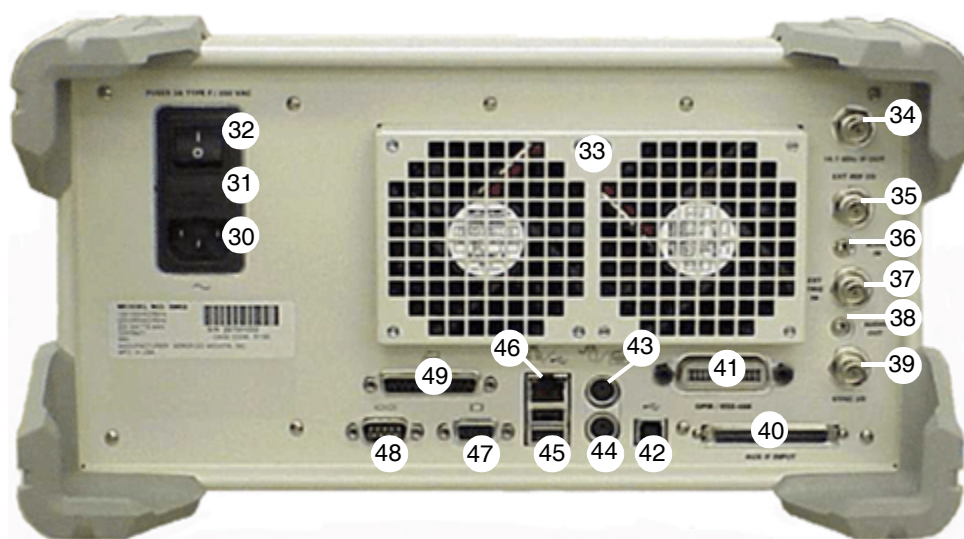
CAUTION

Do not connect a VGA monitor to this connector.

USB Connector (27)

This connector is a USB standard connection that allows connection of USB 1.1 devices (e.g. a USB memory stick or Network connectors). Recommended USB memory device is Aeroflex PN 7110-1100-400. The Front Panel USB Connector is only found on the 3920 Test Set.

Rear Panel Controls and Connectors



3900 Series Rear Panel Connectors

Numerical references are shown in parenthesis (nn).

AC Power Connector (30)

The AC Power Connector is the AC Power source for the Test Set. Connector accepts an IEC 320 connector.

AC Power Fuse (31)

A 3 amp, 250 volt, Type F, 20 mm cartridge fuse (F3AL250V) is included in the unit's supply current path to the power supply module. The AC Power Fuse is located in the Fuse Carrier located on the rear of the Test Set.

AC Power Supply Switch (32)

The AC Power Supply Switch disconnects the 3900 from the AC power supply. The AC Power Supply Switch should not be used for powering down the Test Set: the On/Standby Key should be used for routine powering down because it initiates the power-down procedure, ensuring all settings and test results are saved.

Rear Cooling Outlets (33)

Refer to the section titled Installation Requirements in Chapter 2 of the 3900 Series Operation Manual for information on proper ventilation.

Subject to Export Control, see Cover Page for details.

IF Output Signal Connector (34)

The IF Output Signal is available at this BNC connector. The 10.7 MHz IF Output is the RF signal received and down-converted by the Test Set RF Analyzer. The output level is -10 dBm typical at 10.7 MHz (50 ohm nominal).

Ext Ref I/O External Interface (35)

This is a BNC connection used to connect the Test Set to an external frequency standard, or to output the internal frequency standard from the Test Set to other equipment.

Audio Input Connector (36)

The auxiliary I/O Audio Connector is internally connected and ready for future development. Do not make any external connection to this connector.

External Trigger Signal Input Connector (37)

This is the Oscilloscope external trigger input, BNC connection. Input impedance 10 kOhm.

Audio Output Connector (38)

This auxiliary I/O Audio Connector is internally connected and ready for future development. Do not make any external connection to this connector.

Synchronization Signal Input or Output Connector (39)

This BNC connection is used with the TETRA Base Station Test System for base station receivers generating a sync output signal.

Auxiliary IF Input Connector (40)

Reserved for future development.

GPIB/IEEE-488 Interface Connection (41)

This connector is provided for interconnection to a GPIB/IEEE-488 interface bus.

Standard USB Client Connector (42)

Reserved for future development.

PS/2 Mouse Interface Connector (43)

PS/2 Mouse Interface Connector not currently supported. Only applies to 3901/3902.

Keyboard Interface Connector (44)

Standard PS/2 connection for use of Standard PS/2 keyboard. Only applies to 3901/3902.

USB Connector (45)

Double USB standard connection for use of USB 1.1 devices. Recommended USB memory device is Aeroflex PN 7110-1100-400.

Ethernet Connector (46)

Standard Base T RJ45 connection.

VGA Monitor Output Connector (47)

This connector is a standard VGA style, 15 way, D-type connection that allows a VGA monitor or video projector to duplicate the Test Set's screen display.

Subject to Export Control, see Cover Page for details.

RS-232 Serial Connector (48)

Standard 9 way, D-type connection. Reserved for future development.

Parallel Printer Output Connector (49)

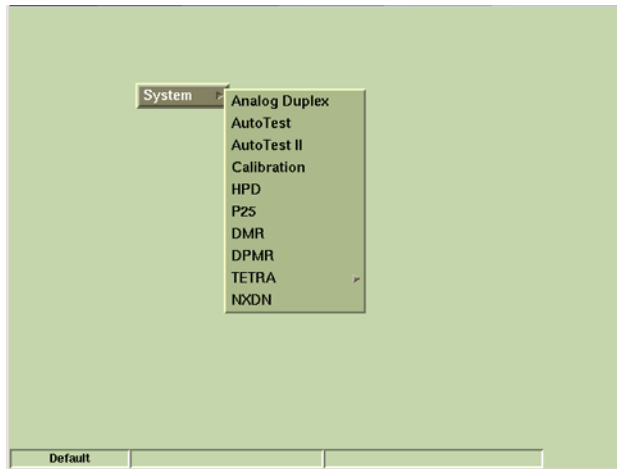
This is a standard 25 way, D-type printer connection.

Operation

Powering On Test Set

Unless specifically mentioned, this refers to local operation of a 3900 configured with factory default settings. To power on the test set:

1. Complete Installation Instructions (refer to page 11).
2. Connect the Test Set to the AC Power Supply.
3. Turn the AC Power Switch on the rear panel to the ON position. The LED above the Supply (power) On/Standby Key on the front panel turns **RED**.
4. Press the Supply (power) On/Standby Key to power on the Test Set.
5. Verify no error messages appear on the display during power-up process. The Factory Default screen appears upon initial start-up; if the Test Set has been used the screen is displayed that was active when the Test Set was powered down.



NOTE

System menu contents vary according to the options installed in the Test Set.

Powering Down Test Set

The Test Set should always be powered down using the Supply (power) On/Standby Key on front panel. The Supply (power) On/Standby Key initiates a power-down sequence which stores all current settings and results in the Test Set's internal memory.

If the Test Set is to be left in an unused state for an extended period of time, power down the unit using the Supply (power) On/Standby Key on the front panel. After the unit has stored settings and is in the OFF state, switch the AC Power Switch on the rear panel to the OFF position. When the Test Set is next powered up it will be restored in the last saved settings state.

Subject to Export Control, see Cover Page for details.

Modes of Operation

The 3900 has three primary functional modes of operation: Test, Configuration and Utilities.

TEST mode provides access to the current operating system and measurement tiles.

CONFIG (Configuration) mode provides access to the Configuration menu and functions of the current operating System.

UTILS (Utilities) mode provides access to general Test Set functions. These functions are not specific to a particular system.

Test Setups

The 3900 is suitable for performing radio system measurements on high performance equipment in research and development environments as well as in production and maintenance facilities. The Test Set supports one and two port duplex test configurations.

One Port Duplex

The One Port Duplex arrangement uses the T/R Connector for RF input and RF output.

This arrangement is typically used for testing mobile radios using a single direct connection to the unit under test.

This arrangement can also be used for over-the-air testing when only a single antenna is available, or for testing Base stations that use a combined Rx/Tx antenna system.

RF Out = T/R
RF In = T/R



Subject to Export Control, see Cover Page for details.

Two Port Duplex GEN / ANT

Selecting the GEN Connector for RF Out and the ANT Connector for RF Input provides the highest level of RF Gen Output and the most sensitive RF Analyzer input.

The ANT Connector is typically used as the Input connector for “over-the-air” testing with separate antennas.

RF Out = GEN
RF In = ANT



GEN / TR

Selecting the GEN Connector for RF Out and T/R Connector for RF Input provides the highest level of RF Gen Output and accepts the highest level of RF Analyzer Input.

The T/R Connector should be selected as the RF Input connector when connecting the Test Set directly to UUT via RF Cable.

RF Out = GEN
RF In = T/R



TR / ANT

Selecting the T/R Connector for RF Output and the ANT Connector for RF Input provides the lowest level of RF Gen output and the most sensitive RF Analyzer Input.

The ANT Connector is typically used as the Input connector for “over-the-air” testing.

RF Out = T/R
RF In = ANT



Subject to Export Control, see Cover Page for details.

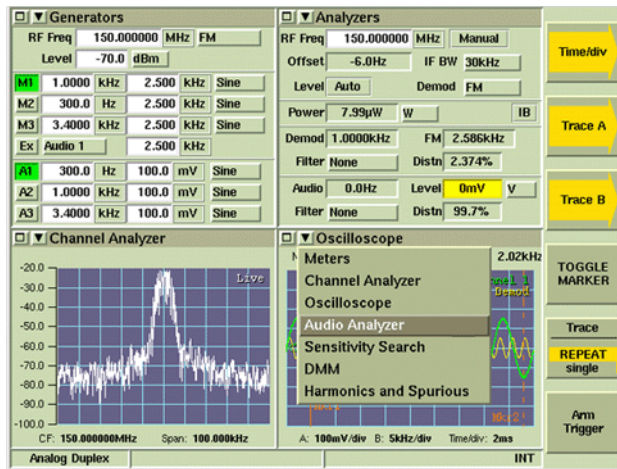
Display Layout

Display

Screen configuration is defined by the 3900 System currently selected. The screen appears as a single tile of fixed size, or a tile or group of tiles that can be minimized or maximized. The area on the right of the display shows any soft keys applicable to the active screen or tile.

Configuring Tiles

Measurement tiles are selected from the drop-down menus on each tile. Selections are limited to the current operating system and tile location.



Soft Keys

Soft keys are displayed on the right of the user screen. Soft key labels identify the key's function.

Action

Action keys initiate immediate actions when pressed.

Toggle Soft key

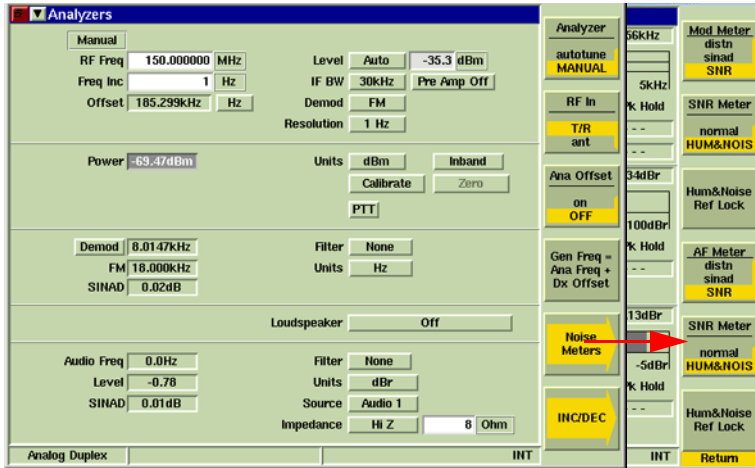
Toggle soft keys offer a choice of two, three or four options.



Subject to Export Control, see Cover Page for details.

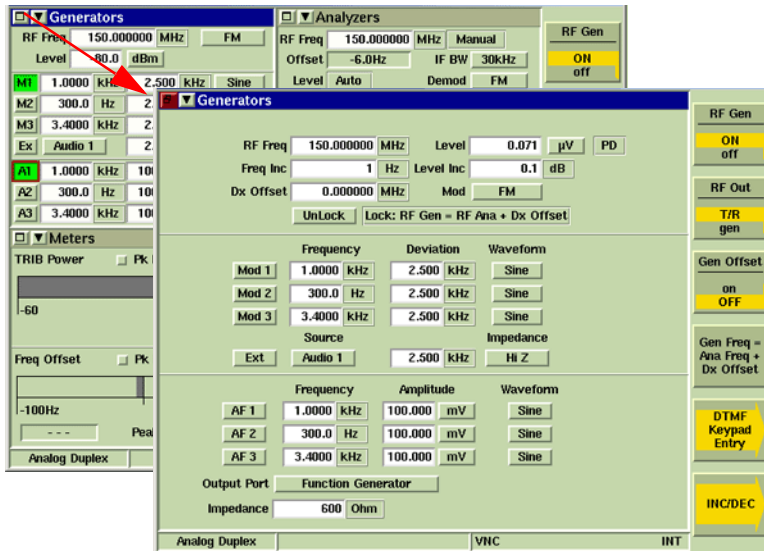
Next Level

Next Level soft keys lead to soft key sub-menus that provide additional functions and features.



Maximized and Minimized Views

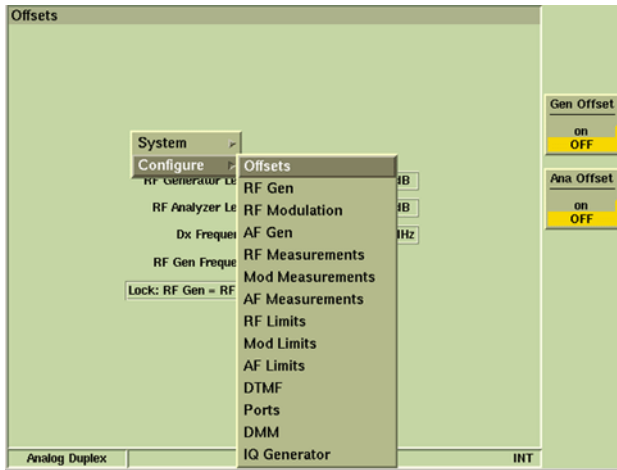
3900 Test Tiles can be viewed in a Maximized or Minimized state. The Spectrum Analyzer Tile can only be viewed in maximized state.



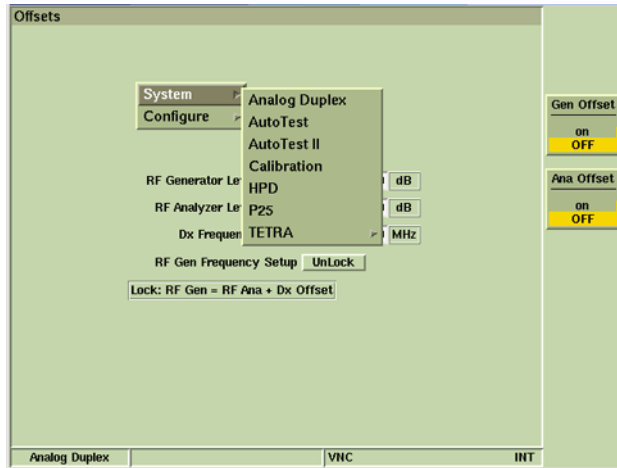
Subject to Export Control, see Cover Page for details.

Floating Menus

Floating Menus are used throughout 3900 Systems to access information such as Configuration and Utilities screens and to change operating Systems.



Configuration Floating Menu



System Floating Menu

Subject to Export Control, see Cover Page for details.

Fuse Replacement Instructions

Fuse Replacement Procedure

STEP	PROCEDURE
------	-----------

1. Verify 3900 is OFF and AC Power is disconnected from Test Set.
2. Press inward on pressure clip to remove Fuse Carrier.
3. Remove Fuse Carrier from Test Set.
4. Replace fuse:



5. Remove Fuse Carrier from Test Set.



3 amp, 250 volt, Type F
20 mm cartridge fuse (F3AL250V)
Aeroflex P/N: 56078 (5106-0000-055)

CAUTION

For continuous protection against fire, replace fuse with fuses of the specified voltage and current ratings.

6. Replace Fuse Carrier by pressing into place.
7. Replace Fuse Cover.

Subject to Export Control, see Cover Page for details.

As we are always seeking to improve our products, the information in this document gives only a general indication of the product capacity, performance and suitability, none of which shall form part of any contract. We reserve the right to make design changes without notice.

CHINA / Beijing	Tel: [+86] (10) 6539 1166	Fax: [+86] (10) 6539 1778
CHINA / Shanghai	Tel: [+86] (21) 5109 5128	Fax: [+86] (21) 6457 7668
FINLAND	Tel: [+358] (9) 2709 5541	Fax: [+358] (9) 804 2441
FRANCE	Tel: [+33] 1 60 79 96 00	Fax: [+33] 1 60 77 69 22
GERMANY	Tel: [+49] 8131 2926-0	Fax: [+49] 8131 2926-130
HONG KONG	Tel: [+852] 2832 7988	Fax: [+852] 2834 5364
INDIA	Tel: [+91] (0) 80 4115 4501	Fax: [+91] (0) 80 4115 4502
JAPAN	Tel: [+81] 3 3500 5591	Fax: [+81] 3 3500 5592
KOREA	Tel: [+82] (2) 3424 2719	Fax: [+82] (2) 3424 8620
SCANDINAVIA	Tel: [+45] 9614 0045	Fax: [+45] 9614 0047
*SINGAPORE	Tel: [+65] 6873 0991	Fax: [+65] 6873 0992
SPAIN	Tel: [+34] (91) 640 11 34	Fax: [+34] (91) 640 06 40
UK / Cambridge	Tel: [+44] (0) 1763 262277	Fax: [+44] (0) 1763 285353
*UK / Stevenage	Tel: [+44] (0) 1438 742200	Fax: [+44] (0) 1438 727601
	Freephone: 0800 282388	
*USA	Tel: [+1] (316) 522 4981	Fax: [+1] (316) 522 1360
	Toll Free: 800 835 2352	

* Indicates Regional Service Center

The Aeroflex logo features a stylized 'A' with a blue triangle pointing downwards, followed by the word 'AEROFLEX' in a bold, sans-serif font. The logo is set against a white background with a blue swoosh underneath.

EXPORT CONTROL WARNING: This document contains controlled technology or technical data under the jurisdiction of the Export Administration Regulations (EAR), 15 CFR 730-774. It cannot be transferred to any foreign third party without the specific prior approval of the U.S. Department of Commerce, Bureau of Industry and Security BIS). Violations of these regulations are punishable by fine, imprisonment, or both.

(1002-4400-8P0 Issue-6)
DIR #: 10000008761 AB



6050 A0



Our passion for performance is defined by three attributes represented by these three icons: solution-minded, performance-driven, customer-focused.