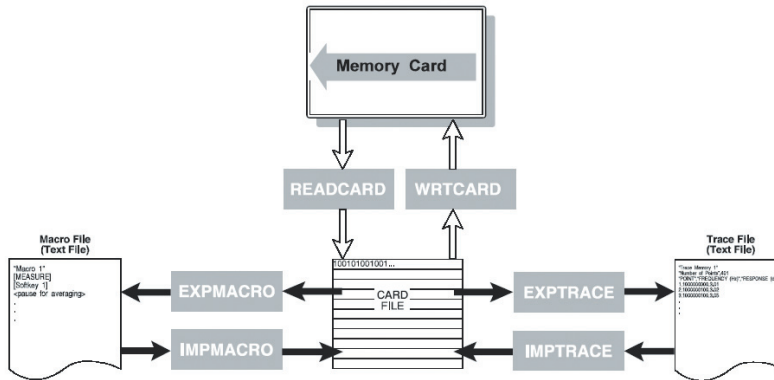


Microwave

6200 Memory Card - PC Utilities

AEROFLEX
A passion for performance.



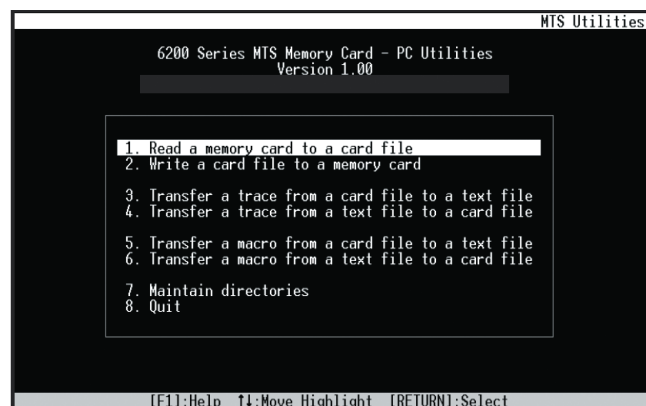
The Memory Card - PC Utilities software package enables the user to archive trace on a PC disk and to write and edit macros.

- Facilitates archiving of MTS traces on a PC disk.
- Speeds up and simplifies generation and editing of macros.
- Includes a shell programme for ease of use.
- Runs on any IBM compatible PC with an 80286 or higher.
- Memory card reader/writer unit for transferring traces and macros between MTS and PC (available as accessory)

The Memory Card -PC Utilities software package supports all of the 6200 series Microwave Test Sets (MTS). It is ideal for users who want to archive a large number of traces or who need to write and edit macros. The software requires a personal computer with the Intel 80286 processor (or higher), 512k of RAM and running MS-DOS 3.1 or later.

The complete contents of an MTS memory card can be read into the PC. This process requires the memory card reader/writer which connects to the parallel port of the PC via a 25-pin D-type connector. Using this technique results traces stored at a remote location can be archived for use at a later date. Tests made in the future can then be compared with earlier results on the PC screen, or MTS. All records can be kept without the need for creating a hard copy.

For users who write long or sophisticated macros the PC Utilities software package makes this process easier. Existing macros can be read into the PC and then edited. This makes modifying text messages simple as the keyboard of the PC can be used. New sections or additional submacros can be added to existing macros. The PC Utilities package consists of six DOS based routines together with a menu driven shell program to allow quick access between each of them. Example macros to generate traces using popular spreadsheets are also provided.



The PC Utilities shell menu

Memory card access

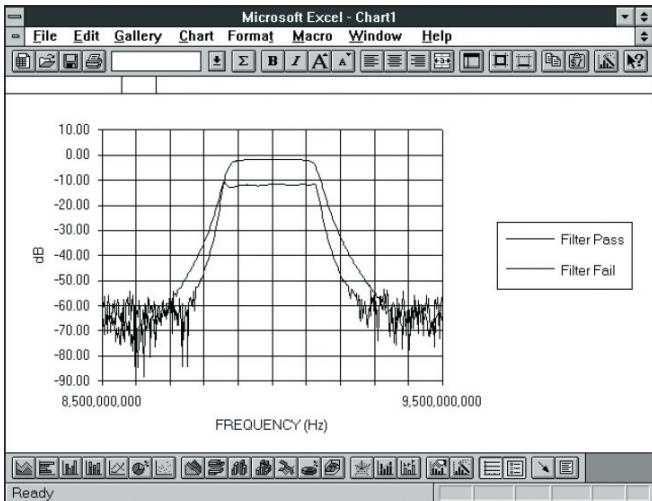
MTS memory cards are available with 128k to 512k of memory. These cards can be configured on the MTS for a number of store types and macros. A 128k memory card can store up to 18 display traces. The complete contents of a memory card can be read into a PC and stored in a card-file. Conversely, new or modified macros and other data can be transferred from the PC to a memory card. Two utilities READCARD and WRTCARD are used for this process.

A memory card reader/writer unit is used for transferring data between the memory card and the PC. The reader/writer connects to the parallel port, which means that desktop and portable PC's can be used. READCARD copies the complete contents of a memory card to a card-file in binary format. The user then gives the card-file a name. A display of current cardfiles in a directory shows each card title, the number of each type of stores configured on that card (e.g. 8 display memories) and the number of macros on the card. WRTCARD copies the contents of a card-file to a memory card.

Trace Memories

Display trace memories can be exported from or imported to a card-file on the PC. Exporting a trace from a card-file allows it to be used in a standard spreadsheet, such as Lotus 123™, Microsoft Excel™ or CASuperCalc™. Once in a spreadsheet the trace data can be manipulated and displayed. Two traces can be displayed simultaneously allowing comparisons to be made. In this way the current performance of a device or system can be compared with its recorded performance from an earlier measurement.

EXPTRACE is the utility that exports a selected trace memory from a card-file as an ASCII file. This is then called a trace memory file. Notes can be added to help identify it in future. Trace memory files can be imported into popular spreadsheets and displayed on the PC display or printed out. Simple spreadsheet macro examples with explanatory notes are provided that import and display trace memories.



Screen shot of two traces generated from a spreadsheet

IMPTRACE utility provides a facility for importing a trace memory stored on the PC into a card-file. In this way historical results can be taken out into the field and the current performance of a device or system compared with its earlier performance.

MTS Macros

The EXPMACRO utility allows an MTS macro to be exported from a card-file to an ASCII file. The macro can then be edited on the PC. An MTS macro is a recording of operations that the MTS will carry out automatically. They are ideal when repetitive test routines are used such as in a production environment, or when complex tasks need to be performed and their implementation needs to be simplified or deskilled. Macros can be generated by recording a sequence of MTS key presses and adding operator prompts. Macros created with

Issue 2 MTS software also allow for decision making with branching and looping conditions.

Once a macro exists as an ASCII file on a PC it can be edited or expanded using the PC keyboard and display. This makes both the generation and editing of macros simpler.

The IMPMACRO utility is used to import a macro from an ASCII file into a card-file. Any syntax errors are detected and highlighted when the new macro is imported. Once in a card file the macro can be stored onto a memory card and then loaded into an MTS for use. (A macro written on an MTS with issue 2 software may not work on an MTS with issue 1 software).

```

Notepad - TESTFIL1.TXT
File Edit Search Help
"Test Filter"
[SAVE/RECALL]
[Softkey 8] {Recall Settings...}
[1][x1]
<pause for meas update>
<display message>
"TEST FILTER MACRO
Please follow the instructions
in the blue boxes

Press [x1] key to continue..."
<pause for terminator>
<remove message>

<display message>
"Press:
[CAL] key to perform path calibration or
[x1] key to continue with measurement"

<Case>
KEY=[CAL]
<run macro>"Path Cal"

<While...Do>[TRUE]
<run macro>"Perform T]
    
```

Macro editing on a PC screen

SPECIFICATION

Minimum systems requirements

PC with Intel 80286 processor (or higher), 512k of RAM and running Windows 3.1 or higher. A full installation of memory card PC Utilities requires 400k bytes of disk space.

Disks supplied

The PC Utilities software is supplied on both 5¼" and 3½" formats.

FUNCTIONALITY

READCARD

Transfers the contents of an MTS memory card into a card-file on a PC.

WRTCARD

Transfers the contents of a card-file from a PC onto an MTS memory card.

EXPTRACE

Transfers a display trace memory from a card-file to a trace memory file.

IMPTRACE

Transfers a trace memory file into a card-file.

EXPMACRO

Transfers a macro from a card-file to an ASCII file.

IMPMACRO

Transfers a macro from an ASCII file into a card-file.

For the very latest specifications visit www.aeroflex.com

CHINA Beijing

Tel: [+86] (10) 6539 1166
Fax: [+86] (10) 6539 1778

CHINA Shanghai

Tel: [+86] (21) 5109 5128
Fax: [+86] (21) 5150 6112

FINLAND

Tel: [+358] (9) 2709 5541
Fax: [+358] (9) 804 2441

FRANCE

Tel: [+33] 1 60 79 96 00
Fax: [+33] 1 60 77 69 22

GERMANY

Tel: [+49] 8131 2926-0
Fax: [+49] 8131 2926-130

HONG KONG

Tel: [+852] 2832 7988
Fax: [+852] 2834 5364

INDIA

Tel: [+91] 80 5115 4501
Fax: [+91] 80 5115 4502

KOREA

Tel: [+82] (2) 3424 2719
Fax: [+82] (2) 3424 8620

SCANDINAVIA

Tel: [+45] 9614 0045
Fax: [+45] 9614 0047

SPAIN

Tel: [+34] (91) 640 11 34
Fax: [+34] (91) 640 06 40

UK Cambridge

Tel: [+44] (0) 1763 262277
Fax: [+44] (0) 1763 285353

UK Stevenage

Tel: [+44] (0) 1438 742200
Fax: [+44] (0) 1438 727601
Freephone: 0800 282388

USA

Tel: [+1] (316) 522 4981
Fax: [+1] (316) 522 1360
Toll Free: 800 835 2352

As we are always seeking to improve our products, the information in this document gives only a general indication of the product capacity, performance and suitability, none of which shall form part of any contract. We reserve the right to make design changes without notice. All trademarks are acknowledged. Parent company Aeroflex, Inc. ©Aeroflex 2008.

www.aeroflex.com
info-test@eroflex.com



Our passion for performance is defined by three attributes represented by these three icons: solution-minded, performance-driven and customer-focused.