

# Protocol Test

## 6401 AIME/CT ISHO -

GSM/GPRS-UMTS Handover Conformance/Protocol Analysis Test Solution

**AEROFLEX**  
A passion for performance.



- 6401 AIME/CT Option to support GSM/GPRS-UMTS handover requirements
- Highly modular flexible design extends use from R&D to Conformance
- 3GPP TS 34.123 and TS 51.010 Compliant
- Sample C++ and ETSI sourced 3GPP test cases
- Independent third party validation
- Fully automated testing including mobile control
- Capability to extend to GSM/GPRS and UMTS testing
- Full training and support packages included
- 2/2.5/3G-combined integrated logs

*The complete deployment for the next or 3rd generation of network technology will take many years to occur. As roll-out commences, 3G services and networks will be available in localized areas only. The capability to seamlessly operate between existing 2/2.5G networks and the localized 3G networks will be key to success.*

In Europe and through the majority of the rest of the world this 2G and 3G interaction will be between GSM/GPRS and UMTS networks. The Inter-System HandOver (ISHO) requirements are defined by the 3GPP (3rd Generation Partnership Project). The resultant output is a comprehensive set of specifications setting out the requirements to which equipment must conform, and the scenarios against which equipment must be verified.

To reduce the time it takes to deliver a mobile to market, the R&D process is accelerated if the user can test against these conformance specifications whilst still in development.

### EXPERTISE IN DIGITAL CELLULAR TEST

Aeroflex has been closely involved in providing test solutions since the launch of digital cellular systems. These have delivered users significant time and cost benefits in technologies such as GSM, GPRS, EDGE and CDMA.

Aeroflex develops its own hardware and software and works with industry leaders in areas such as conformance test cases. This approach ensures the integrity and reliability of the test systems.

### MEETING CUSTOMER NEEDS

Aeroflex delivers a total solution where elements such as reliability, support and customisation are recognized to be of equal importance. This approach enables solutions to be offered that can be tailored to meet the specific needs of the user.

### PRODUCT OVERVIEW

The 6401 AIME/CT ISHO solution is Aeroflex's latest ProCLAIM family offering and provides an ISHO protocol and conformance test solution. The solution combines the mature industry validated RIL 2/2.5G 6103G platform with the 3G 6401 platform.

The solution leverages the capability of both platforms, to deliver all required functionality from the outset.



Aeroflex works closely within the 3GPP and GCF forums to deliver Conformance Test cases in packages based on the GCF prioritisation.

### R&D APPLICATIONS

The AIME/CT software is also designed to address applications in R&D and interoperability testing. The powerful software environment provides access to features such as:

- Detailed protocol signaling exchange between the mobile and the network with diagnostic capability

- Real time logging, decoding and filtering of the information

- Filtering capability to capture desired information down to specific 3GPP primitives

- Colour coding of the information to improve readability of screens

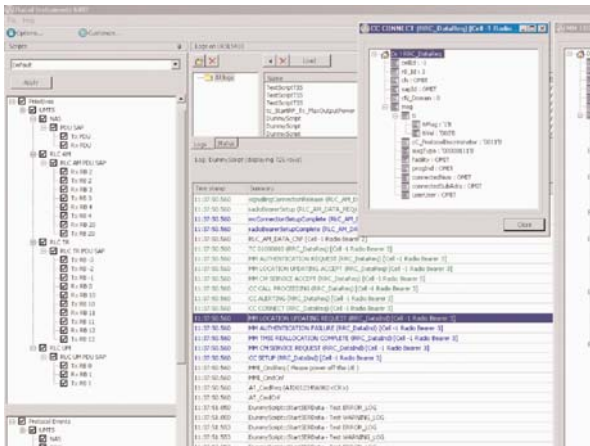
- Generation of log files to allow off-line protocol analysis - log files contain both 2G and 3G messages.

- Modification of TTCN conformance test cases

- Development of TTCN test cases

- Development of new test cases in any COM based language

Thus, a user can configure the 6401 AIME/CT ISHO to emulate specific network configurations and quickly identify incorrect protocol behaviour within the mobile. From either the on-screen display or the log-files detailed information can easily be understood.



### FUTURE PROOF

The 6401 AIME/CT is a highly modular and flexible test solution. The hardware is designed to support all the major telecommunication standards, focusing first on 3GPP UMTS FDD testing.

The hardware design uses compact PCI architecture, controlled and configured from an external PC. Baseband and RF transceiver modules are used to generate channels and RF carriers. The modular system architecture allows many different configurations. This results in a test solution easily upgraded if additional capability is required. The user has the capability to emulate highly complex network scenarios or generate multiple channels as test needs evolve.

For conformance testing, the 6401 is focused to first meet the higher priority GCF identified UMTS protocol conformance test cases. The

more complex test cases that require emulation of up to 6 UMTS cells and generation of multiple RF carriers can easily be accommodated.

### SUPPORT

Support of the system hardware is an essential element in maximizing efficiency and return on investment of your equipment. Aeroflex offers several comprehensive hardware support packages, which are tailored to typical usage profiles.

The 6401 AIME/CT ISHO comes with a comprehensive worldwide hardware, software and test case support package. Two tiers of support packages are offered to the user. Regardless of the level of support chosen, users have access to a helpdesk facility where any faults or issues can be logged, and are guaranteed to receive a response from Aeroflex within the next working day.

The support also covers issues such as specification tracking and any changes in the 3GPP versions of the standard. To fulfil specific support needs, the user is able to customize any of the support packages.

Further details about support can be found in the support section on the Aeroflex website

## TECHNICAL INFORMATION

---

Please refer to separate 6401 and 6103 AIME/CT Conformance Test System product information sheets.

## ORDERING INFORMATION

---

### 6401 MOBILE AIR INTERFACE TEST SYSTEM

|          |   |
|----------|---|
| 6401-007 | 1 UMTS Carrier, 3 cells plus 1 GSM/GPRS Cell    |
| 6401-008 | 2 UMTS Carriers, 4 Cells, plus 2 GSM/GPRS Cells |
| 6401-009 | 3 UMTS Carriers, 5 Cells, plus 3 GSM/GPRS Cells |

### 6401 CONTROL PC

|           |                |
|-----------|----------------|
| 6400-250  | Control PC     |
| option 93 | PC Workstation |

### SOFTWARE ENVIRONMENT

|          |                              |
|----------|------------------------------|
| 6401-100 | UMTS Capability              |
| 6401-502 | ISHO Capability              |
| 6401-110 | TTCN Target Adapter software |
| 6401-120 | COM API software             |

### 3GPP 34.123/51.010 CONFORMANCE TEST CASES

|          |                                      |
|----------|--------------------------------------|
| 6401-260 | GCF ISHO CS & PS GSM-UMTS test cases |
|----------|--------------------------------------|

### GPRS/EGPRS TEST CAPABILITY

Please refer to separate 6103 AIME/CT Conformance Test System product information sheet.

#### CHINA Beijing

Tel: [+86] (10) 6539 1166  
Fax: [+86] (10) 6539 1778

#### CHINA Shanghai

Tel: [+86] (21) 5109 5128  
Fax: [+86] (21) 5150 6112

#### FINLAND

Tel: [+358] (9) 2709 5541  
Fax: [+358] (9) 804 2441

#### FRANCE

Tel: [+33] 1 60 79 96 00  
Fax: [+33] 1 60 77 69 22

#### GERMANY

Tel: [+49] 8131 2926-0  
Fax: [+49] 8131 2926-130

#### HONG KONG

Tel: [+852] 2832 7988  
Fax: [+852] 2834 5364

#### INDIA

Tel: [+91] (0) 80 4115 4501  
Fax: [+91] (0) 80 4115 4502

#### JAPAN

Tel: [+81] 3 3500 5591  
Fax: [+81] 3 3500 5592

#### KOREA

Tel: [+82] (2) 3424 2719  
Fax: [+82] (2) 3424 8620

#### SCANDINAVIA

Tel: [+45] 9614 0045  
Fax: [+45] 9614 0047

#### SPAIN

Tel: [+34] (91) 640 11 34  
Fax: [+34] (91) 640 06 40

#### UK Cambridge

Tel: [+44] (0) 1763 262277  
Fax: [+44] (0) 1763 285353

#### UK Stevenage

Tel: [+44] (0) 1438 742200  
Fax: [+44] (0) 1438 727601  
Freephone: 0800 282388

#### USA

Tel: [+1] (316) 522 4981  
Fax: [+1] (316) 522 1360  
Toll Free: 800 835 2352

As we are always seeking to improve our products, the information in this document gives only a general indication of the product capacity, performance and suitability, none of which shall form part of any contract. We reserve the right to make design changes without notice. All trademarks are acknowledged. Parent company Aeroflex, Inc. ©Aeroflex 2008.

[www.aeroflex.com](http://www.aeroflex.com)  
[info-test@eroflex.com](mailto:info-test@eroflex.com)



Our passion for performance is defined by three attributes represented by these three icons: solution-minded, performance-driven and customer-focused.