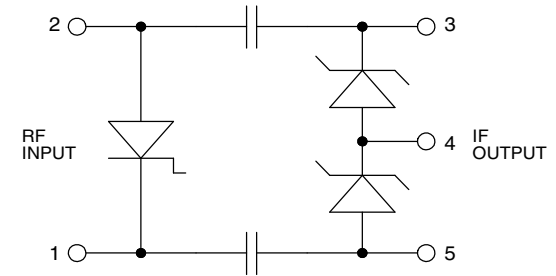
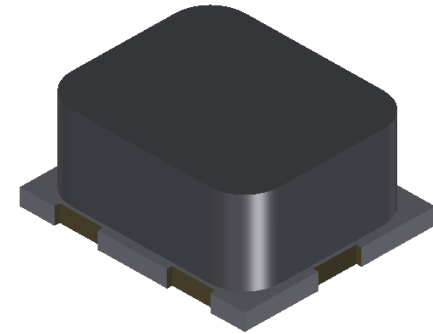
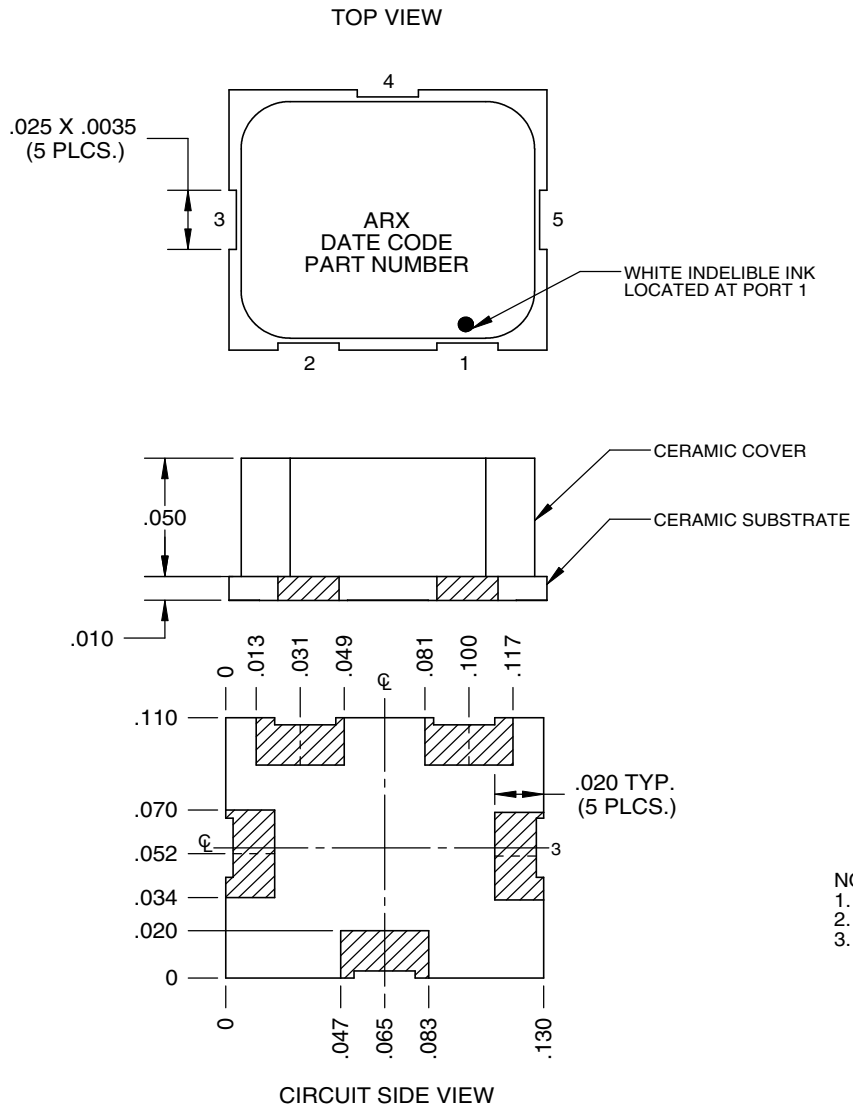


# CS121



- NOTES:  
 1. SUBSTRATE MATERIAL: 10 MIL THICK 99.6% ALUMINA.  
 2. COVER: BLACK CERAMIC.  
 3. TOP SIDE AND BACKSIDE METALLIZATION: 500a Ti/W 3000A Au  
 PLATING: 60u" ETCHABLE ELECTROLITIC Ni/40u Au MIN

ALL DIMENSIONS +/- 0.001 INCH