

TERMINATIONS

2.9mm, DC - 40 GHz, 0.5 Watts

SPECIFICATIONS:

Models: TS400M, TS400F, TS400HM, TS400HF

RoHS
Compliant

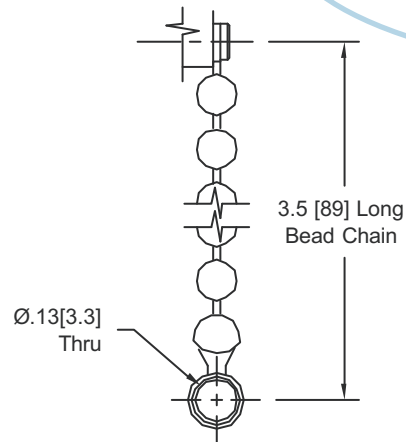
AEROFLEX
A passion for performance.

Electrical:

Frequency Range _____ DC - 40 GHz
 VSWR _____ 1.20:1 Max.
 Input Power _____ 0.5 Watts Avg. @ 25°C
Derated Linearly to 0.1 Watts @ +85°C
 Impedance _____ 50 Ohms
 Operating Temp Range _____ -45°C to +85°C
 RF Leakage _____ 90 dB Min.

Mechanical:

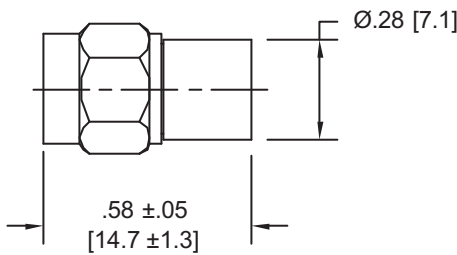
2.9mm Connectors _____ Passivated Stainless Steel
Mates both Mechanically and Electrically with SMA, K* and 3.5mm Series Connectors
 Conductors _____ Gold Plated Beryllium Copper
 Bead Chain _____ Passivated Stainless Steel



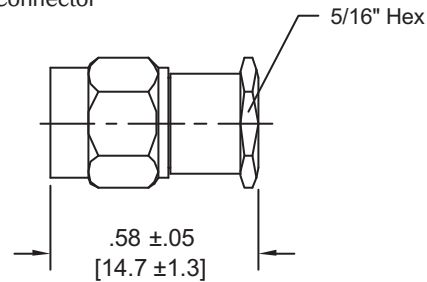
CHAIN DETAIL

* K is a Trademark of Anritsu Corp.

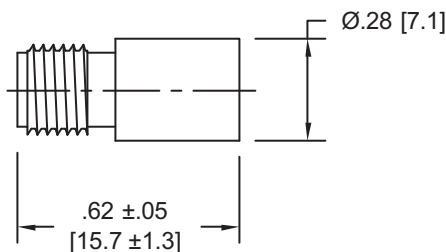
Model Number: **TS400M**
2.9mm Male Connector



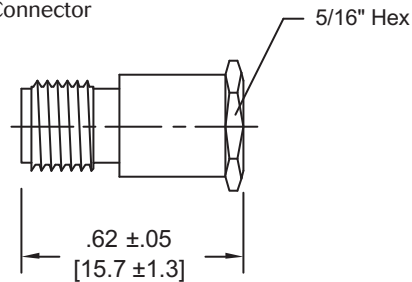
Model Number: **TS400HM**
2.9mm Male Connector



Model Number: **TS400F**
2.9mm Female Connector



Model Number: **TS400HF**
2.9mm Female Connector



HOW TO ORDER:

Model Number: **TS400XYZ**

Body Style
= No Hex
H = Hex

Style
= No Chain
C = Chain Included

Connector Configuration
M = Male
F = Female

Ordering Examples:

Model Number: **TS400MC**
2.9mm Male; DC - 40 GHz; Chain Included

Model Number: **TS400HF**
2.9mm Female; DC - 40 GHz; Hex Style; No Chain

TS400: REV G

AEROFLEX
INMET

Aeroflex / Inmet, Inc. • 300 Dino Drive, Ann Arbor, MI 48103 • U.S.A.
 888-244-6638 or 734-426-5553 • FAX: 734-426-5557
 www.aeroflex.com/inmet • inmet-sales@eroflex.com