

# TERMINATIONS

BNC (75Ω), DC - 1 GHz, 1 Watt

## SPECIFICATIONS:

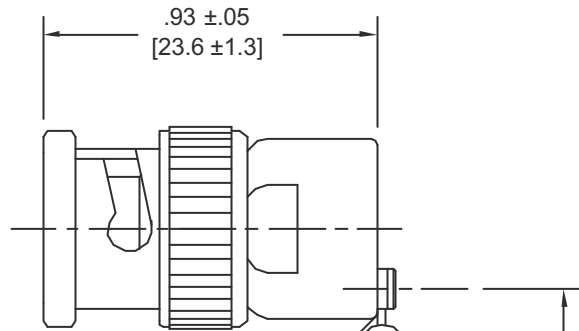
Models: 3038/75 & 3038/75C

**RoHS**  
Compliant

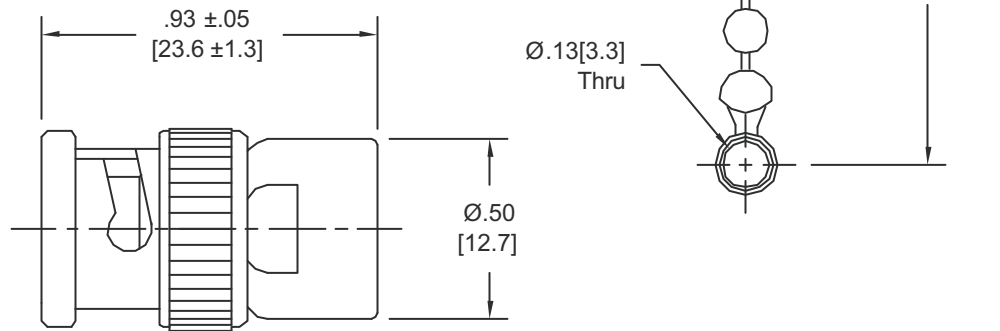
<b>Electrical:</b>	
Frequency Range _____	DC - 1 GHz
VSWR _____	1.10:1 Max.
Input Power _____	1 Watt Avg. @ +25°C Derated Linearly to 0.25 Watts @ +100°C
Impedance _____	75 Ohms
Operating Temp. Range _____	-20°C to +100°C
<b>Mechanical:</b>	
BNC Connectors _____	Nickel Plated Brass
Conductors _____	Gold Plated Beryllium Copper
Bead Chains _____	Passivated Stainless Steel



Model Number: **3038/75C**  
BNC Male Connector Chain Included



Model Number: **3038/75**  
BNC Male Connector



Note: Dimensions in Brackets are Expressed in Millimeters and are for Reference Only.

3038\_75: REV D



Aeroflex / Inmet, Inc. 300 Dino Drive, Ann Arbor, MI 48103 • U.S.A.  
888-244-6638 or 734-426-5553 • FAX: 734-426-5557  
[www.aeroflex.com/inmet](http://www.aeroflex.com/inmet) • [inmet-sales@eroflex.com](mailto:inmet-sales@eroflex.com)